

Latent Tuberculosis Infection in Grant County

2001-2005

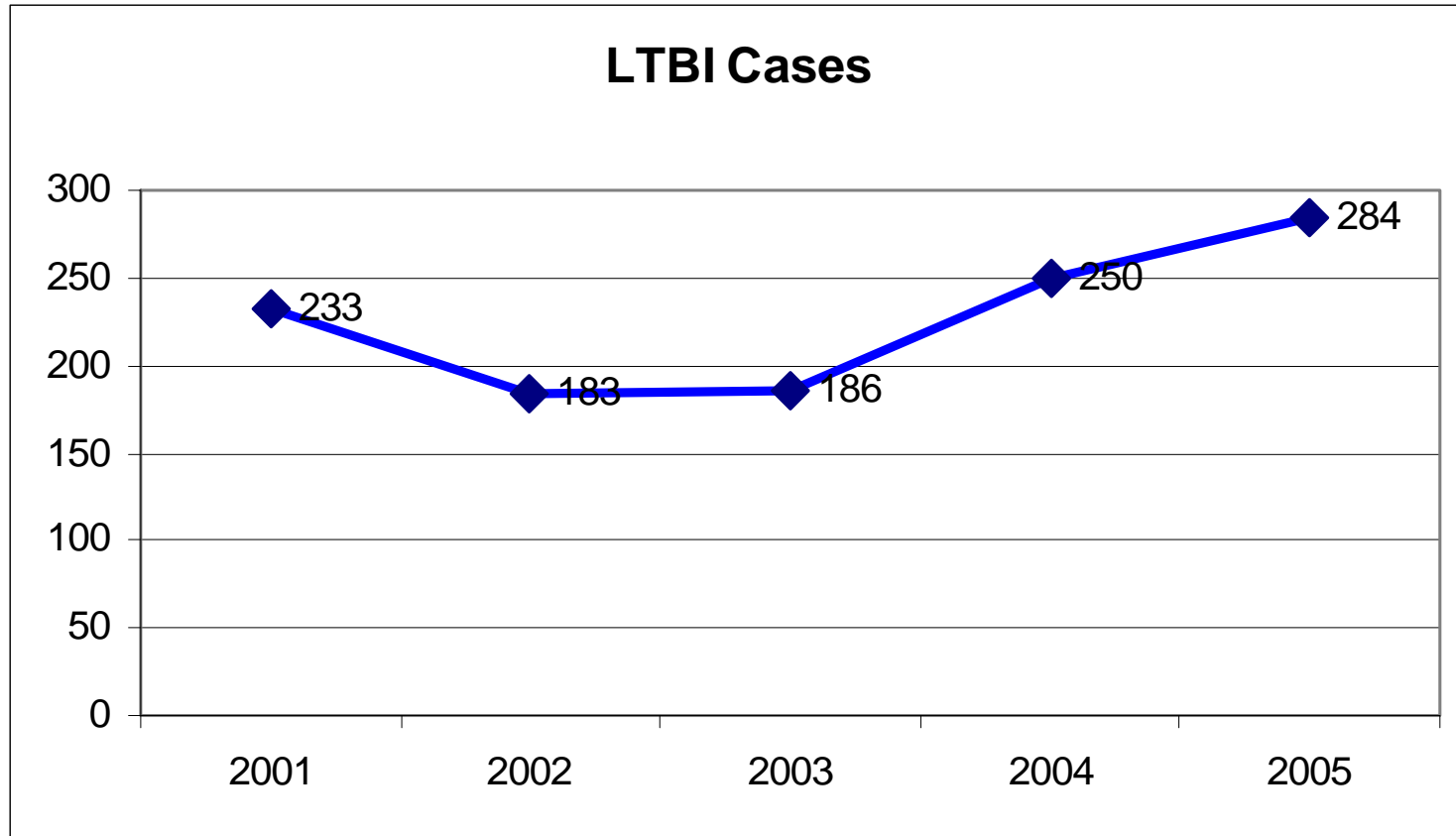
Presented and Prepared by
Heidi Michael



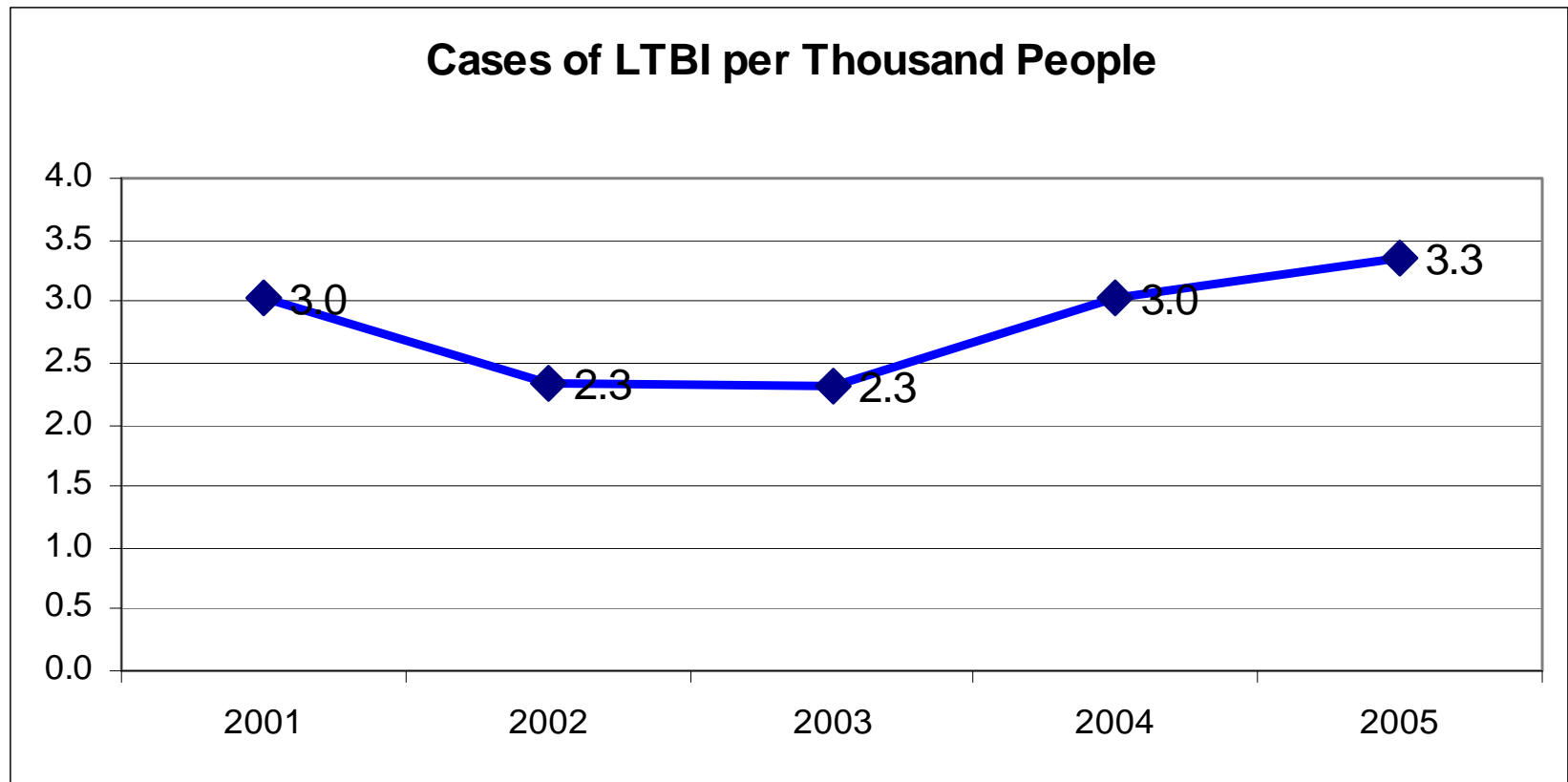
Overview

- Number of Cases & Occurrence Rates
- Demographics
- Medication Choice and Completion

Number of Cases



LTBI Occurrence Rates in Grant County



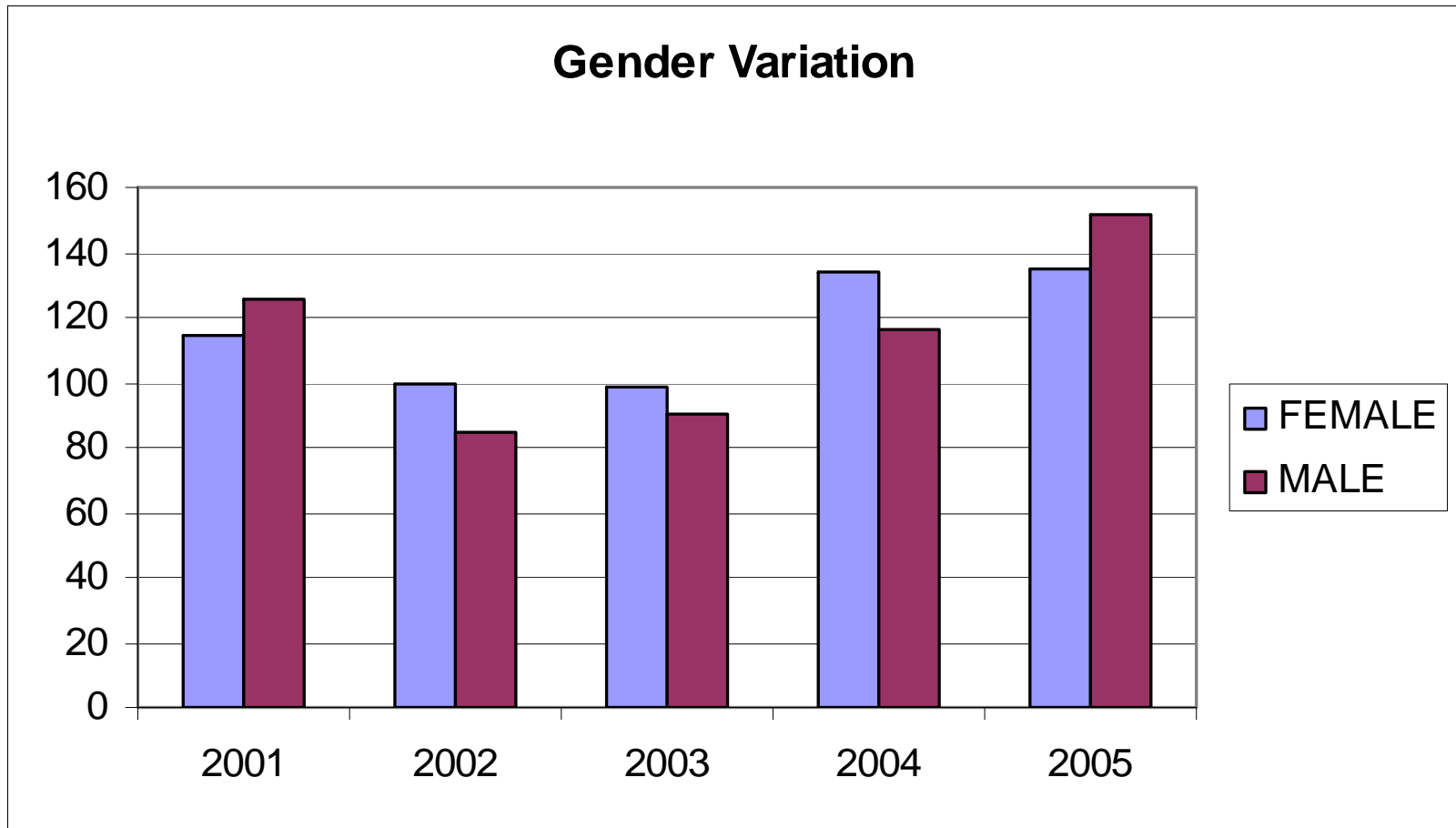
LTBI Occurrence Rate Worldwide

- According to a report by WHO in 2001:
 - 1 in 3 people worldwide are infected with TB
 - 8.7 million new cases a year
 - 1.7 million deaths a year



Demographics

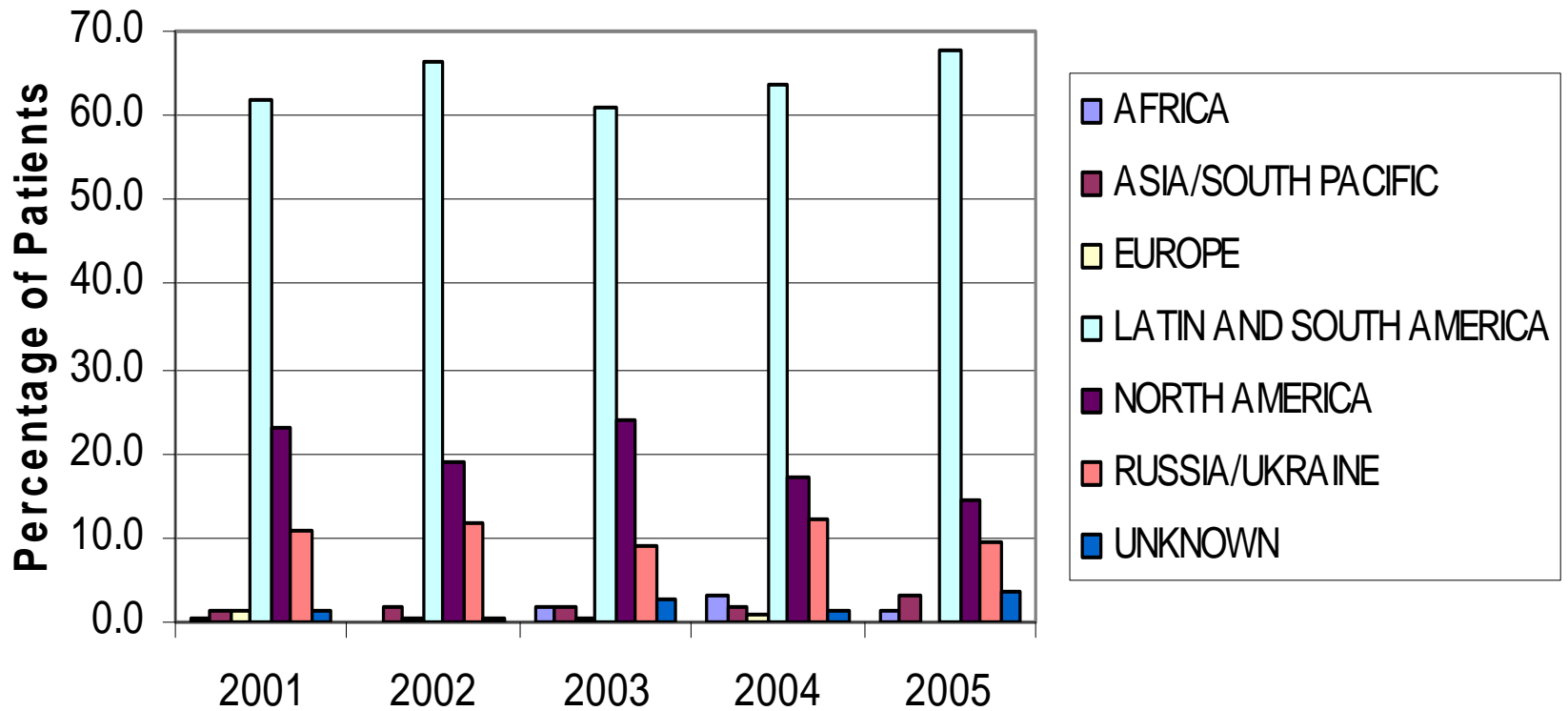
Gender



Nationality

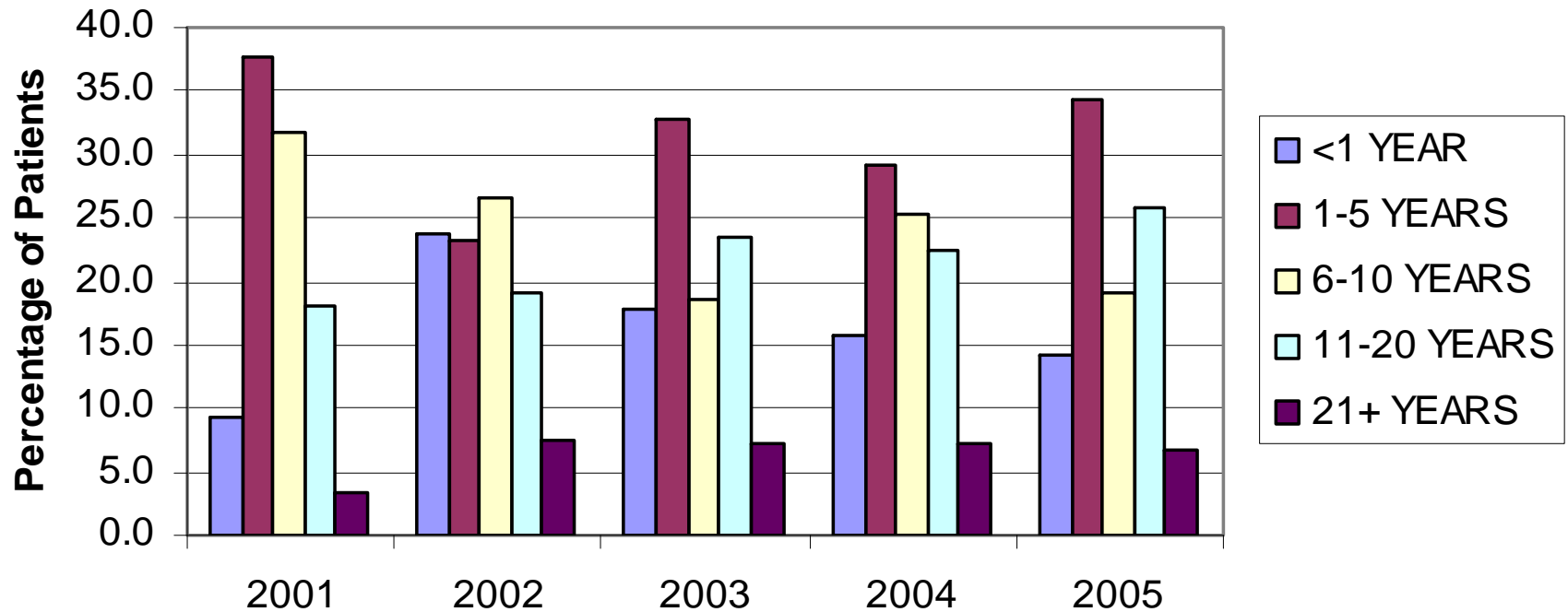
- Majority of patients are foreign born (80.5%)
 - Of these 76% were born in Mexico (707 or 61.2% of all patients)
 - And 13.3% were born in Ukraine or Russia (123 or 10.7% of all patients)
- Only 19.5% (220) of patients were born in the United States

Region of Origin

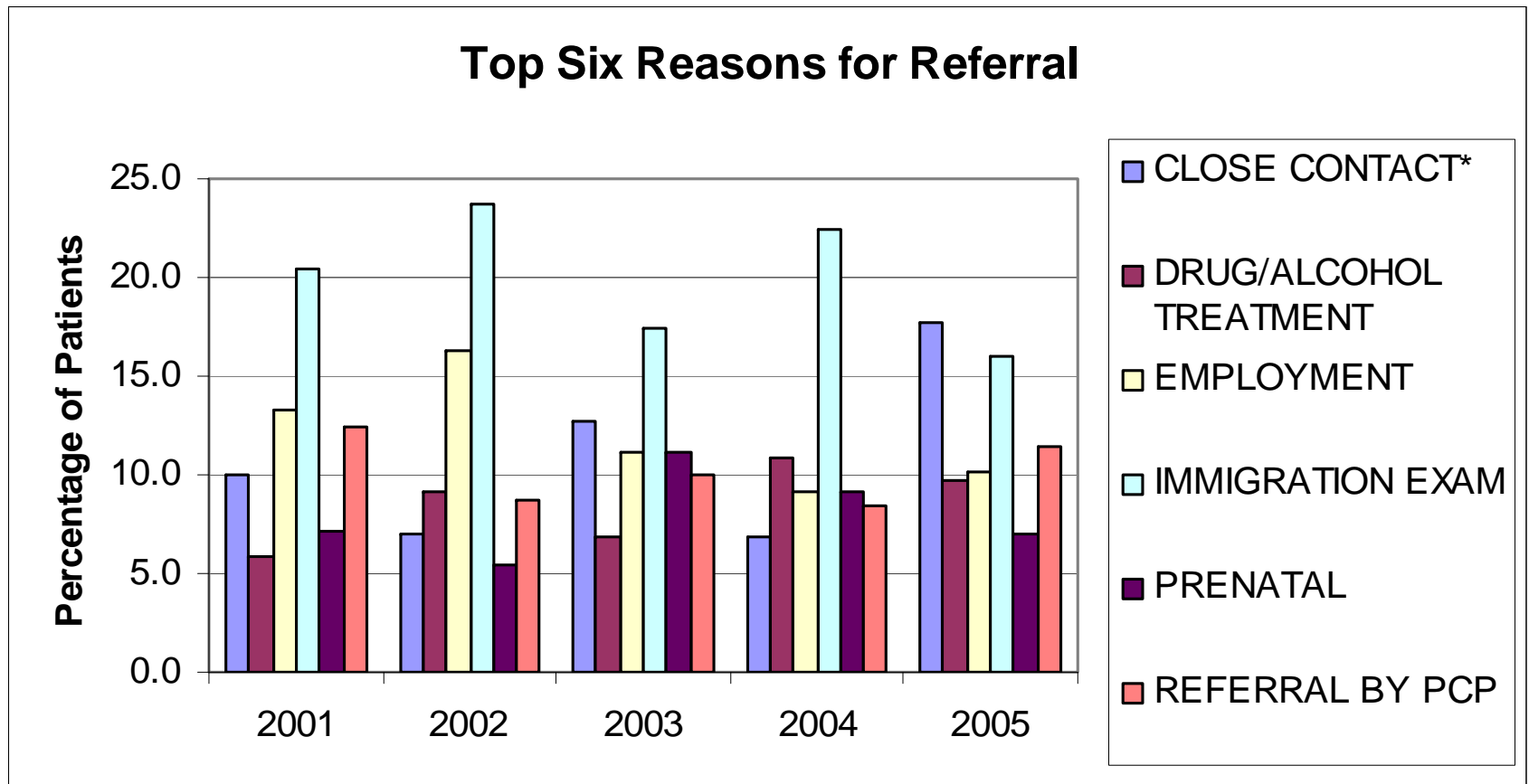


Length of Residence in the United States

Time Spent in USA



Referral Reasons

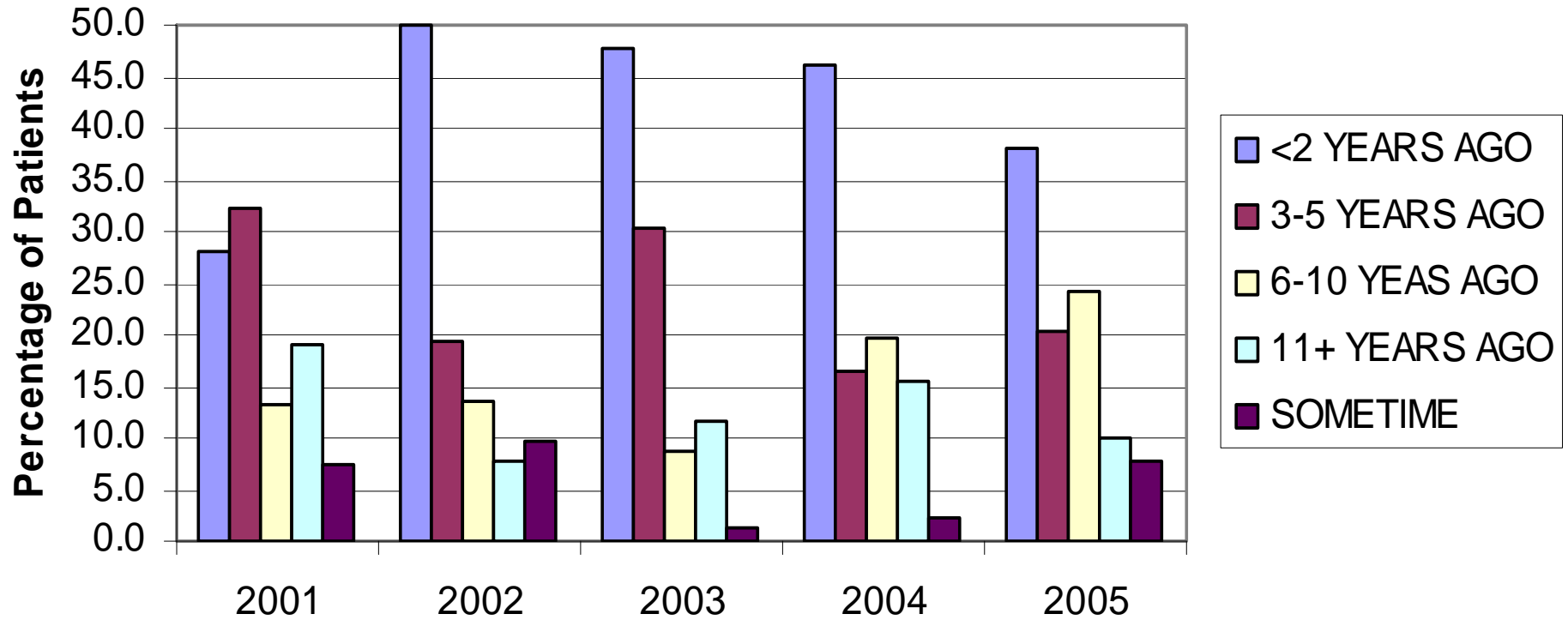


*Includes close contact to both active and latent TB patients

Foreign Travel

- 38.6% of patients (359) had traveled to a foreign country sometime in their life
 - 67.5% went to Mexico
 - 8.3% went to Asia or the South Pacific
 - 7.1% went to Europe
 - 6.1% went to Canada
- 41.8% of the 359 traveled within the last 2 years

Foreign Travel

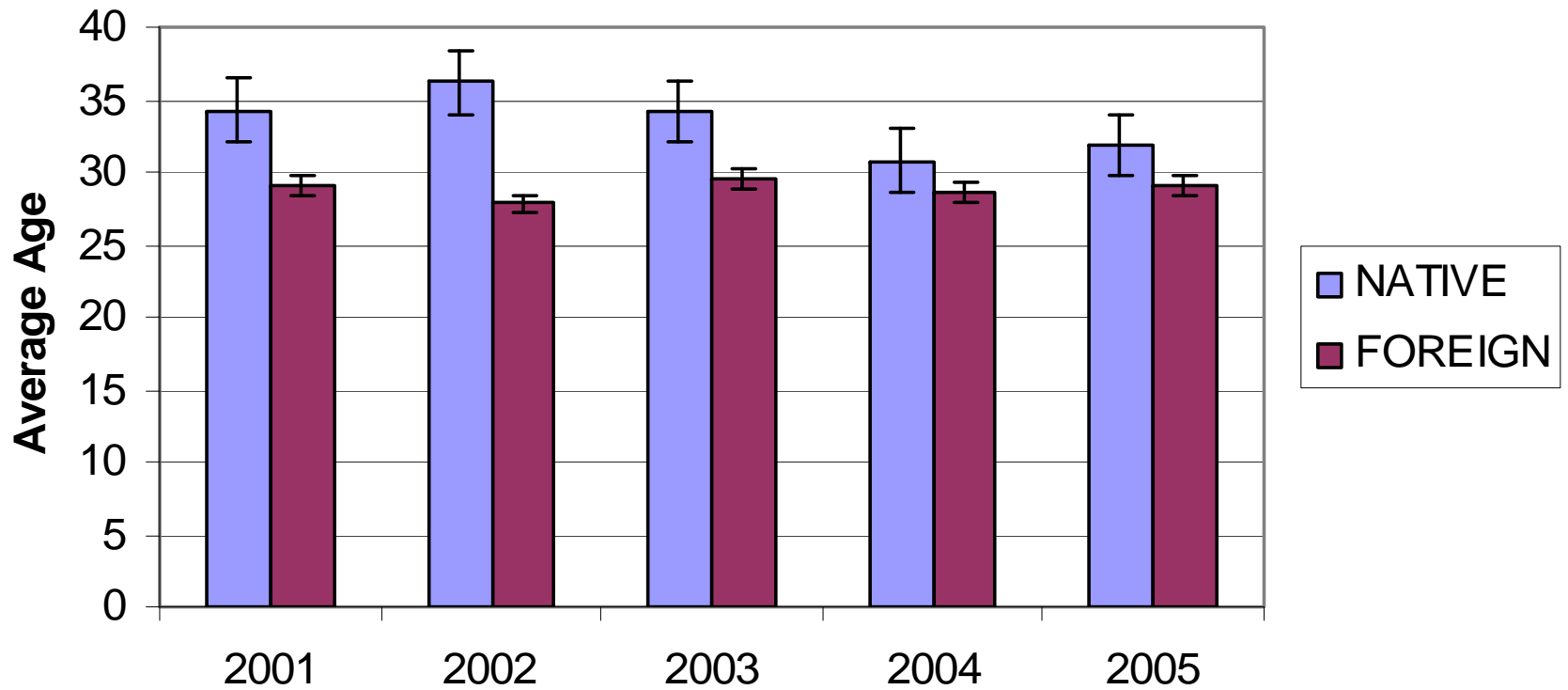




Age

- Ages of patients ranged from 3 months up to 87 years
- Average ages
 - Native born patients: 33.5 years
 - Foreign born patients: 28.8 years
 - All patients: 31.1 years

Average Age Comparison



Age Categories

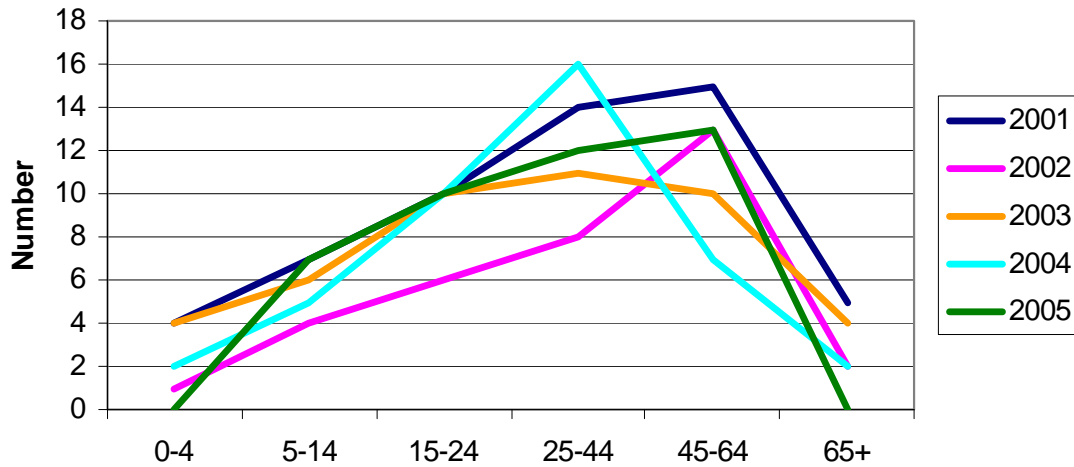
■ Native Born

- Large variation
- Mostly working force age categories (25-64)

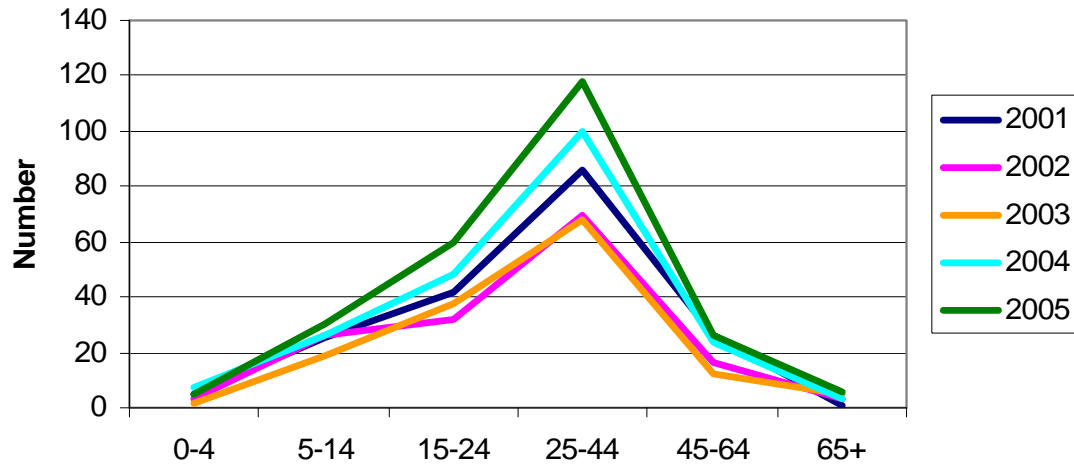
■ Foreign Born

- Very little variation
- Statistically significant peak at the 25-44 year-old-age category

Native Born Age Categories



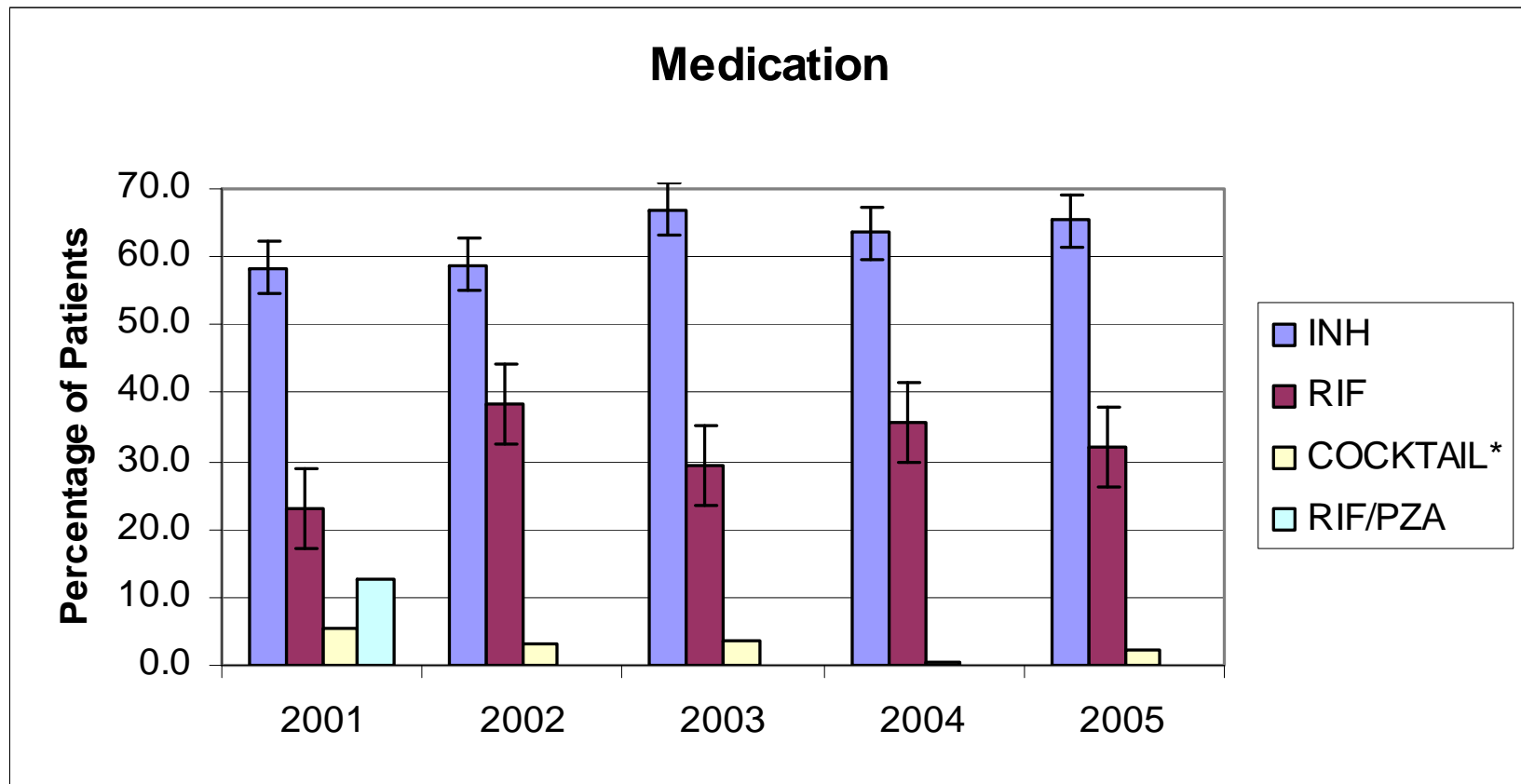
Foreign Born Age Categories





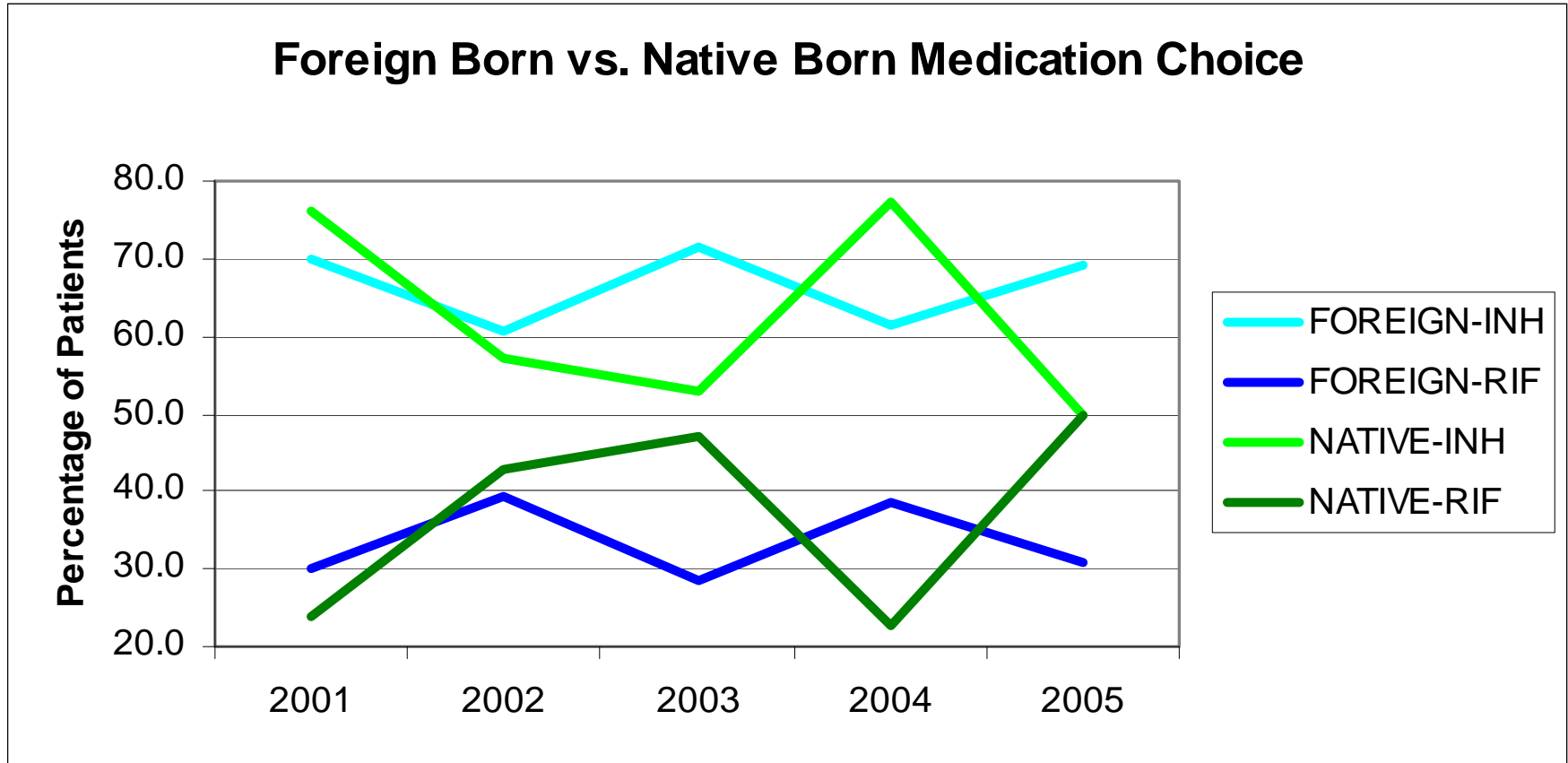
Medication Choice and Completion Rates

Medication Choice

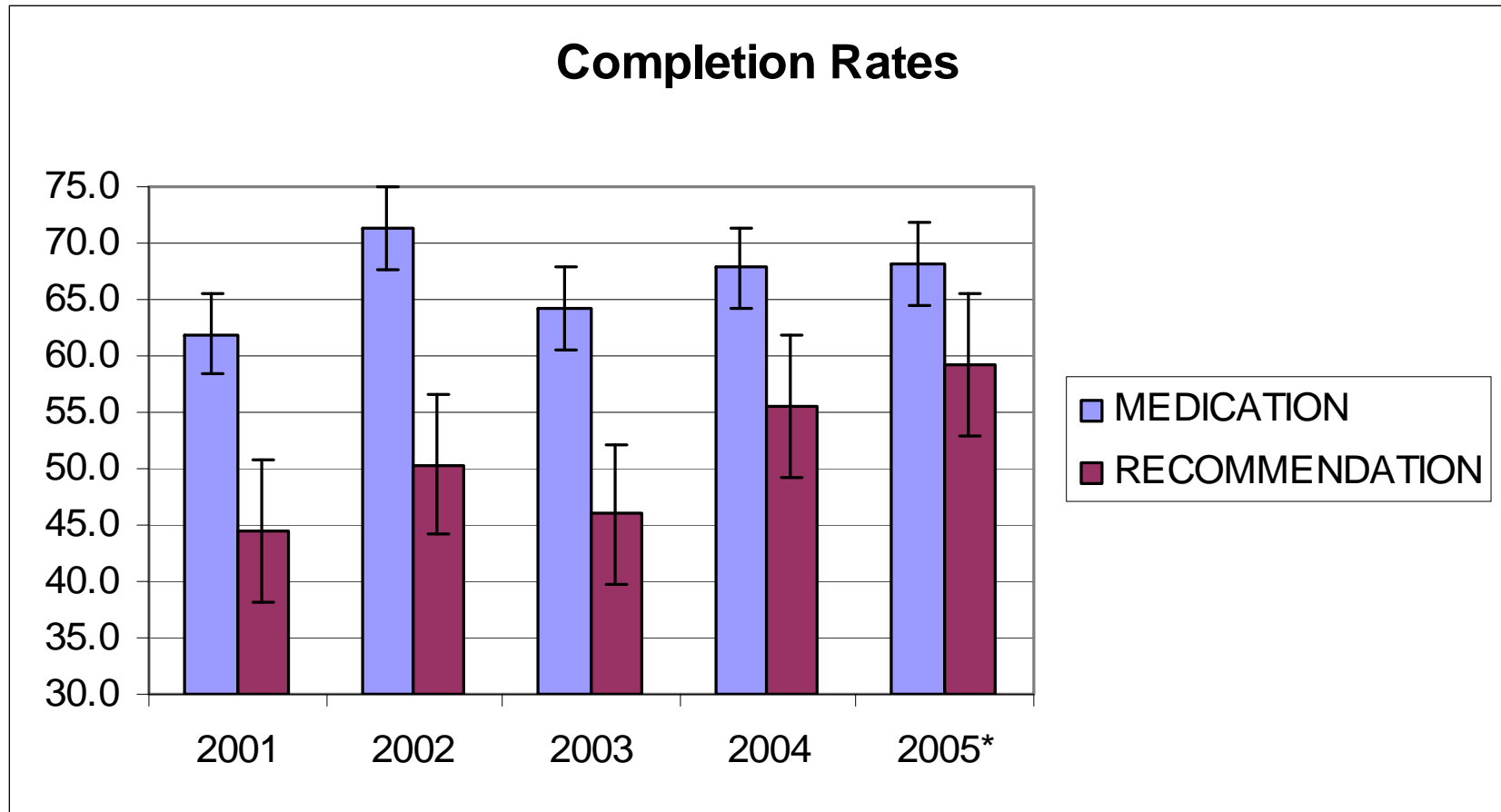


*Includes suspected active TB patients

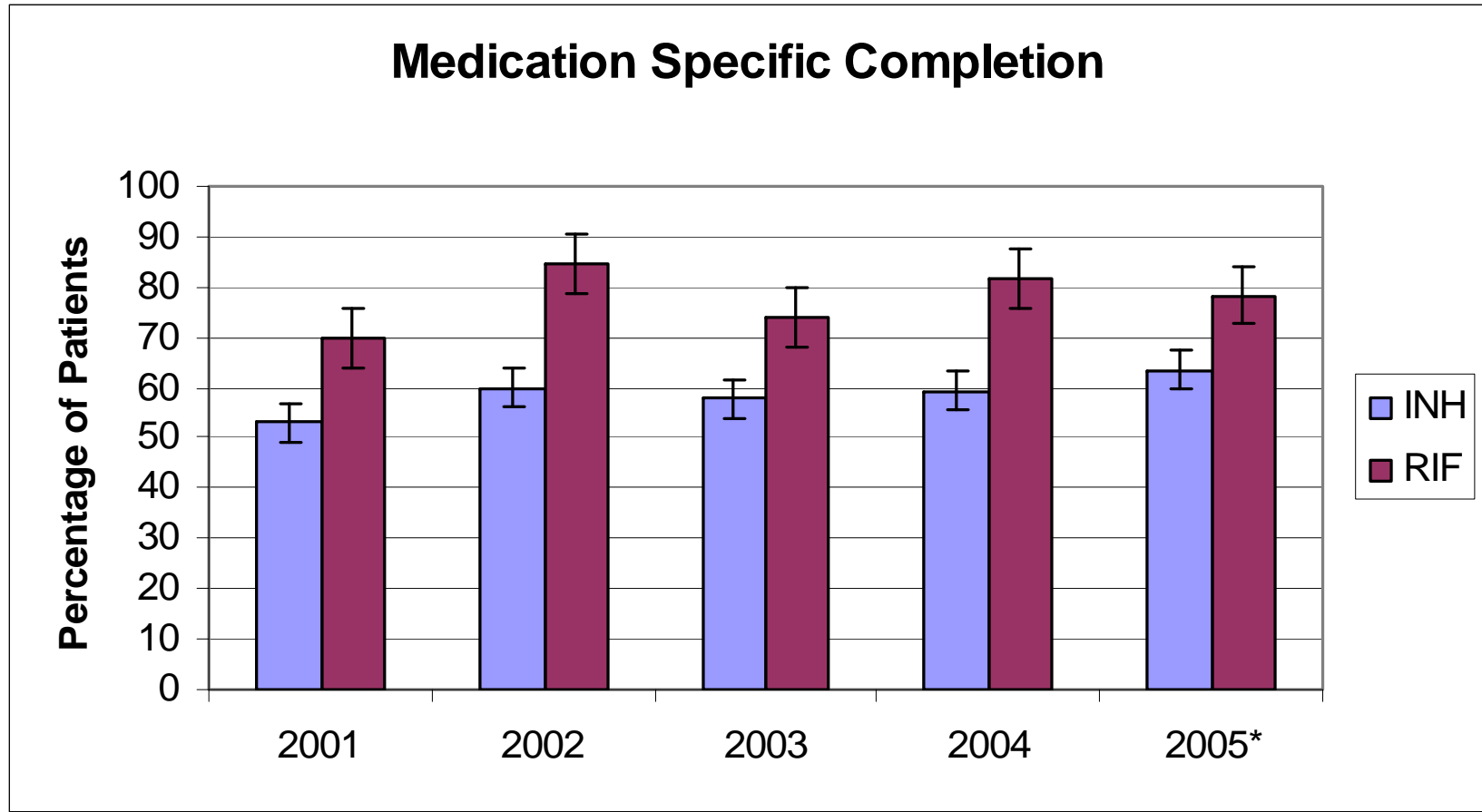
Origin Specific Medication Choice



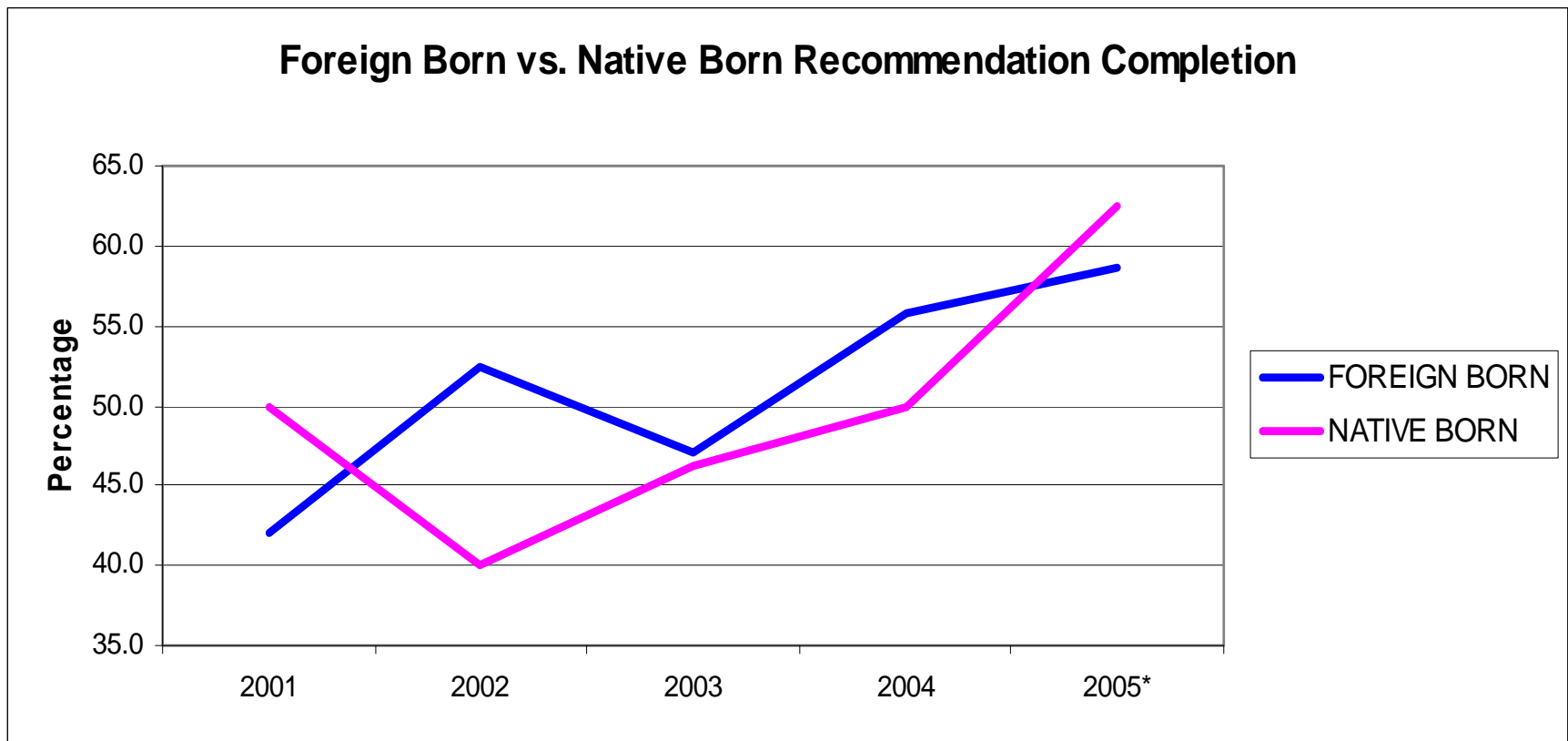
Completion Rates



Medication Specific Completion



Origin Specific Completion Rates of the Recommended Treatment





Reasons for Non Completion

- Moved out of county, state, or country
- GCHD staff was unable to contact patient
- Patient chose not to start
- Side effects to drugs
 - Included: rash, nausea/vomiting, dark urine, exhaustion, and high LFTs
 - Number of cases
 - 9 INH
 - 5 RIF



Summary

- Currently have an increasing rate of incidence
- Patient composition is primarily of recently migrated (within 5 years) Mexican origin with an average age of 29 years
- INH is the medication of choice and completion rates are rising